

# CONCRETE PLANTS

Mobile mixing plant - Horizontal mixing plant - Compact mixing plant



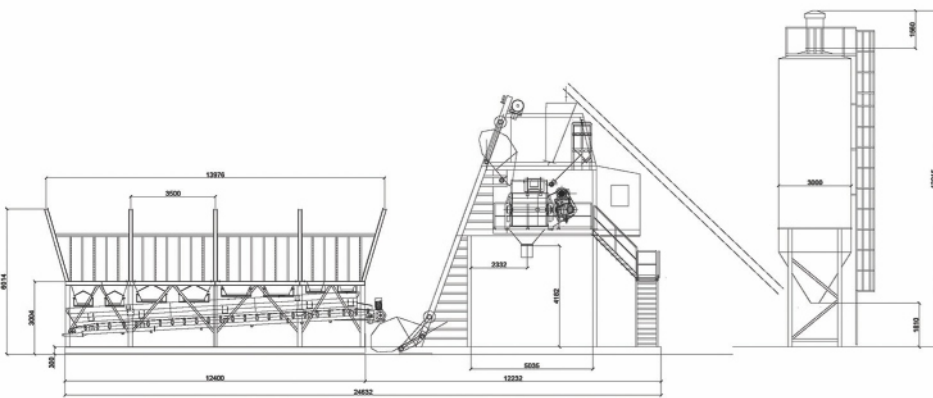
[www.simi.rs](http://www.simi.rs)



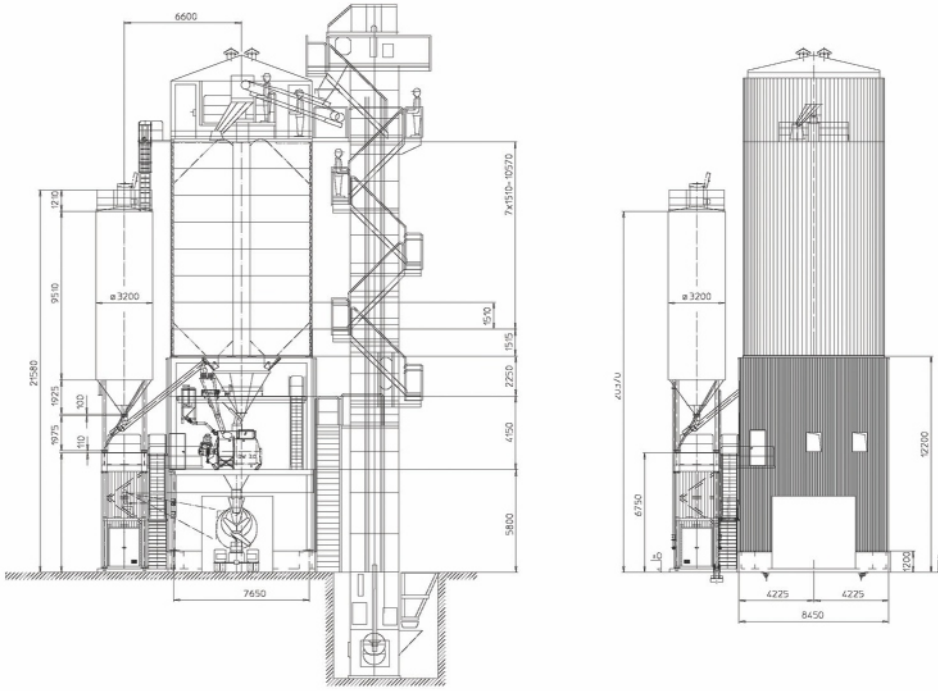


Concrete factories have been constructed and manufactured based over 40 years of experience from leading experts in concrete making technology. Maximum mobility requirements have been met with our type of MOBIL BSA XXLS concrete plant. Installation and commissioning can be achieved within 5-8 hours, with a previously prepared mounting point.

The automatic control system is located on the platform of the concrete factory in a soundproof and thermally insulated cabin. The complete control system contains all the control functions achieved through a microprocessor with a built-in computer that controls the whole process



# VERTICAL MIXING PLANT



The aggregate is placed directly above the scale and the platform with the mixer. They take up minimal space, and are very environmentally friendly as they are closed, so noise and dust contaminations are minimized. They are suitable for operation in all weather conditions. The capacity of the concrete plant is customizable and can be supplied with ring pan or twin shaft mixers. Filling of the silo for the aggregate (which can contain up to 10 different fractions) is done via a belt conveyor or a bucket elevator.

# MOBILE FLOW MIXING PLANT



Mobile flow concrete factory with mixer with a capacity of 150m<sup>3</sup> / h for dry concrete used as a substrate for road paving. It is equipped with: two line silos for the aggregate, each with capacity of 25m<sup>3</sup>/h, a cement scales, a compressor and a control system for the automatic operation of the plant. The installed power of the plant is 55 kW.



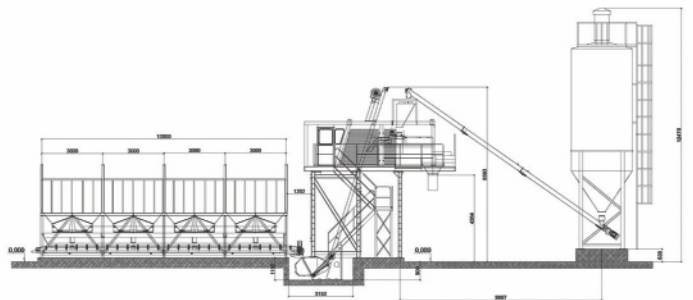
Horizontal concrete factories are characterized by a simple, robust construction, built on the 40 years of experience of our engineers.

Depending on customer requirements, they can be fitted with a ring pan, twin shaft and planetary mixer.

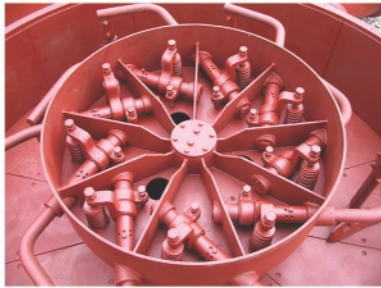
Concrete factories are made in two variants:

Line silos with different capacities of 10-60m<sup>3</sup>, and can be buried, semi-buried or level with the terrain.

Line silos are filled with a loader, conveyor belt or directly from a truck.



# MIXERS



## MBV High speed Pan Mixer (with or without wirbler)

MODEL/MBV(A)	375	565	750	1125	1500	2250	3000
Dry filling litres max.	375	565	750	1125	1500	2250	3000
Dry filling kgs. max.	600	850	1200	1800	2400	3600	4800
Batch output compacted ca. cu. mtr.	250	375	500	750	1000	1500	2000
Main drive motor [kW]	11	15	22	30	37	55	75
Motor of hydraulic pump [kW]	-	-	-	-	-	-	-
Mixer empty weight [kg]	1500	1980	2500	3500	4600	7000	8500
Number of blades	4+1	5+1	5+1	6+1	6+1	8+1	10+1
Mixing pan dia. (A) [mm]	1720	1900	2200	2500	2500	3000	3370
Mixing pan height (B) [mm]	525	525	550	550	650	650	1740

## Double shaft mixer type MBH

MODEL/MBH	1500	1875	2250	3000	3375	3750	4500	4875
Dry filling [l]	1500	1875	2250	3000	3375	3750	4500	4875
Dry filling [kg]	2400	3000	3600	4800	5400	6000	7200	7800
Batch output compacted ca. cu. mtr.	1000	1250	1500	2000	2250	2500	3000	3,25
Main drive motor [kW]	37	2x22	2x30	2x37	2x37	2x45	2x55	2x55
Motor of hydraulic pump [kW]	2,2	2,2	2,2	2,2	2,2	2,2	2,2	2,2
Mixer empty weight [kg]	4150	5250	5800	7700	8000	8800	9500	9500
Number of blades	7+7	7+7	7+7	7+7	7+7	9+9	9+9	9+9
Outer peripheral speed	1,40	1,40	1,40	1,40	1,40	1,40	1,40	1,40
Width of mixers (A) [mm]	2040	2040	2040	2470	2470	2470	2470	2470
Length of mixer (B) [mm]	1360	1360	1360	2670	2670	3110	3110	3110
Mixing height (C) [mm]	1315	1315	1315	1500	1500	1500	1500	1500



## Planetary mixer



MODEL/MBP	375	565	750	1125	1500	2250	3000
Dry filling [l]	375	565	750	1125	1500	2250	3000
Dry filling [kg]	600	850	1200	1800	2400	3600	4800
Batch output compacted ca. cu. mtr.	250	375	500	750	1000	1500	2000
Main drive motor [kW]	11	15	22	30 (37)	37 (45)	(37) 55, 75	75 (90)
Motor of hydraulic pump [kW]	1,0	1,0	1,5	1,5	1,5	2,2	2,2
Mixer empty weight [kg]	1900	2200	3150	3850	5200	87400	8350
Mixing stars	1	1	1	1	1 (2)	2	2
Number of blades	3	3	3	3	3	(4) 6+1	6+1
Width of mixers (A) [mm]	1270	1270	1835	2060	2215	2616	2850
Mixing pan height (B) [mm]	685	685	625	700	750	750	810
Height of mixer (C) [mm]	1495	1495	1922	2150	2295	2718	2870

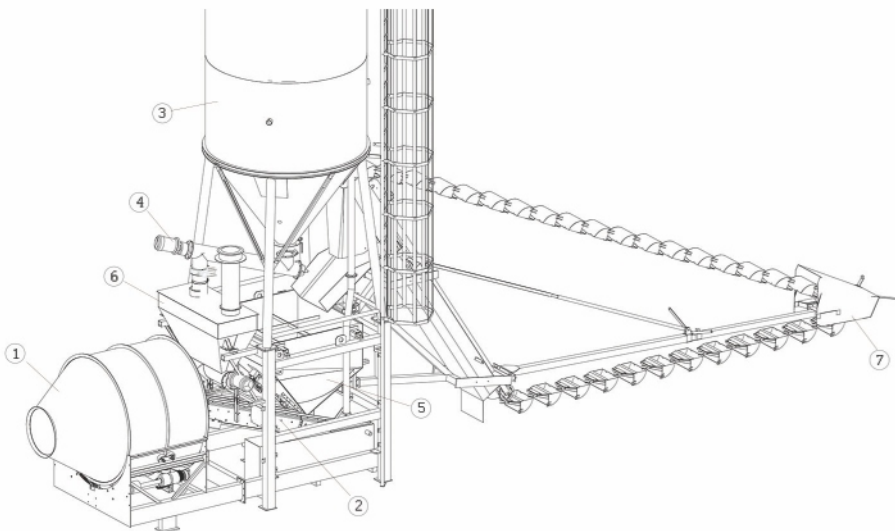
# COMPACT MIXING PLANT WITH SCREPER 15-90 m<sup>3</sup>/h



They can be used for the production of concrete at construction sites or at precast concrete factories. This type of concrete plant requires little space and hence it is suitable for sites with limited available space. The control is via a state-of-the-art designed microprocessor control system housed in the operator's cabin. The operator's cabin is sound and heat insulated. During the construction stage a special attention was paid to the modular design and a quick assembly process of concrete factory. They also require very little foundation work.



## COMPACT MIX



### COMPACT MIX

Various capacity concrete batching plants with a rake bucket for aggregate dosing, cement scales, aggregate scales, water meter and water tank, as well as automatic equipment for automatic operation of the concrete plant. They can be with gravity, ring-pan and planetary mixers, with capacity from 350l to 2250l.

- 1 MIXER
- 2 Tape conveyor
- 3 Cement silos
- 4 Screw conveyors
- 5 Agregat weigher
- 6 CEMENT WEIGHER
- 7 Buckets

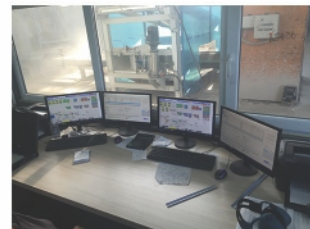
## Control of concrete plant with PC

The complete managing system contains all managing functions which are performed in line with the microprocessor and can be displayed on a monitor. Whole process is controlled by a computer. Data base contains all necessary elements for the control of working process and the equipment consumption.



## Control by concrete plant with control panel

The compact measured quantity control system contains all central control functions. All the mixed plants work processes are automatically controlled. They are not on a background lit -LCD display. A database is integrated for mix formulas, customers, orders and vehicles.



## Concrete recycling plant

Similar concrete recycling factories consist of a single device for breaking concrete and separating aggregates from cement. The aggregate is returned to the landfill, while the cement milk is deposited in the pool and diluted with clean water when rinsing. The whole process is programmed with automatics for various seasons and weather conditions (summer, winter, low temperatures, etc.). Recycled cement milk is maintained in a liquid state by a programmed mixing system. The same cement milk is returned to the concrete production process via a water balance. In this way, the entire cycle is closed and there is no runoff from washing into the surface and underground waters, and therefore no pollution from the additives added to the concrete is present.

The factory consists of:

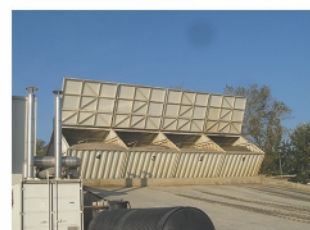
- Basket for concrete shaking and water from mobile concrete mixer washing, concrete pumps and concrete mixers
- Cement aggregate separator
- mobile concrete mixer washing line
- Unloaded basket washing line
- Recycled water dispatch lines
- Fresh water supply lines
- Control cabinet
- Agitator – Mixer that maintains the recycling water in a liquid state
- The required number of sludge pumps for the complete automatic operation process

The recycling plant is delivered in various variants, depending on the customer's needs.



## Cladding and heating for operation during the winter

Closing the factory of concrete is done on special request. Depending on the weather conditions of work, concrete factory is a set of coats, and especially for covering a very difficult winter operations. Closing is done with panels 50 mm thick doors and windows the standard dimensions of the ISO system, closure of the factory set to skip device.



## Heating of Aggregates in Winter Conditions

We supply two types of heating systems

- with steam for continuous operation
- with hot air and hot water.

Both systems are fully automated.

In summer months the air heating system is used for sand drying.



## FACTORY -SIMI



## HIGH QUALITY COMPONENTS



## REFERENCES

